



SONON ULTRASOUND IMAGING SYSTEM



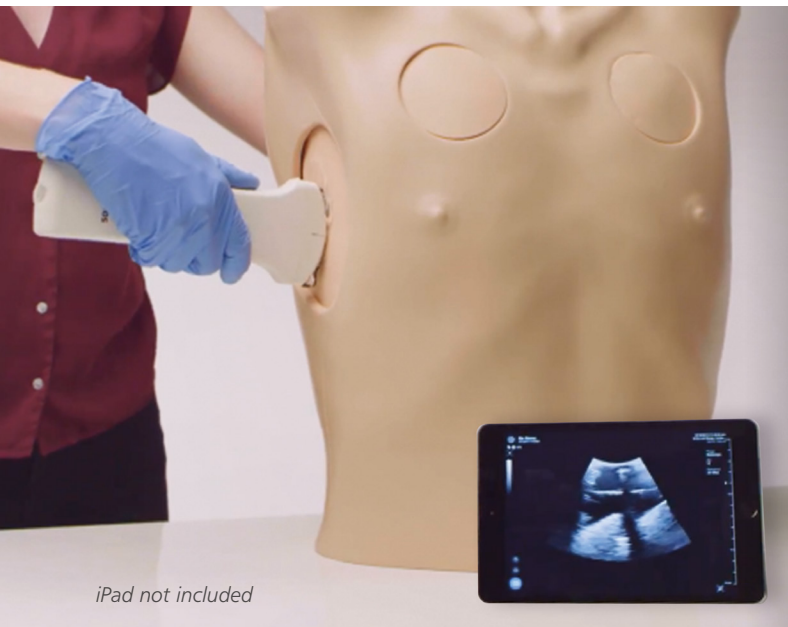
An ideal aid for teaching ultrasound guided procedures in clinical learning environments.

Developed for emergency medicine, **SONON** is an affordable and high quality mobile ultrasound system.

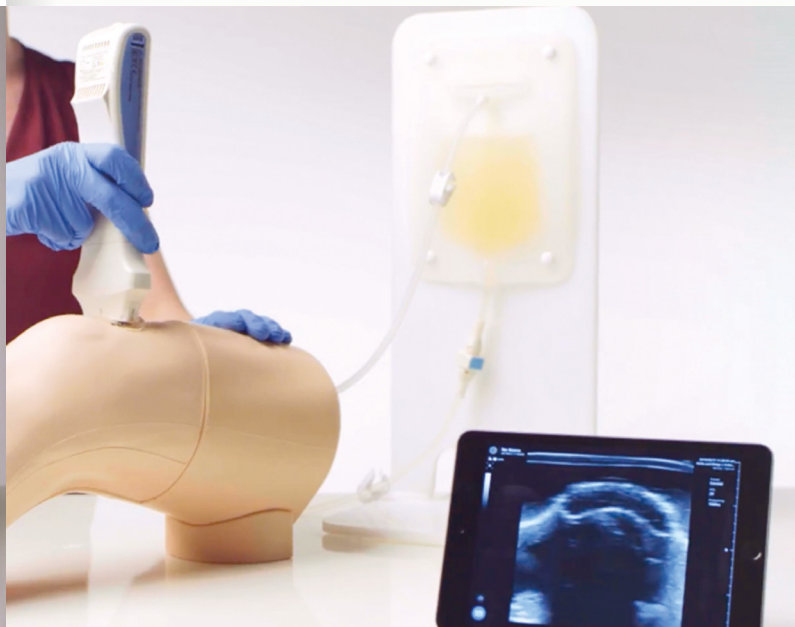
HC300C *Convex*



HC300L *Linear*



iPad not included



BENEFITS

- Cost effective training solution
- Premium IQ for its class of system
- Portable with integral wifi
- Intuitive and quick set up
- Simple to connect to a smartphone or tablet

limbsandthings.com

PRODUCT APPLICATION

SONON 300C = Obstetrics and Gynaecology, General Abdomen

SONON 300L = Muscular-Skeletal, Vascular, Breast, Thyroid, Lung



WHAT'S INCLUDED

- SONON 300C or SONON 300L
- Battery Pack
- Battery Charger
- Charger Adaptor
- Main Adaptor
- User Manual Book
- Quick Guide

SPECIFICATION

HC300C

Convex

- Frequency: 3.5 MHz only
- Max. Depth: 20cm
- Imaging Mode: B Mode

- 390g with Battery
- Dimensions: 78 x 219 x 38mm
- Field of View: 58.2°

HC300L

Linear

- Frequency: 5, 7.5 and 10MHz
- Max. Depth: 10cm
- Imaging Mode: B Mode / Colour Mode

- 370g with Battery
- Dimensions: 78 x 229 x 38mm
- Field of View: 4cm

Battery

- Type: Rechargeable Li-ion Battery Pack
- Capacity: 2600 mAh

- Charging Time: 3 Hours (Full)
- Using Time: 3 Hours (scan), 12 Hours (stand-by)



VISIT OUR WEBSITE TO SEE OUR FULL RANGE OF PRODUCTS

limbsandthings.com

To find out more about SONON or to book a demonstration, please contact

0117 311 0500 | sales@limbsandthings.com